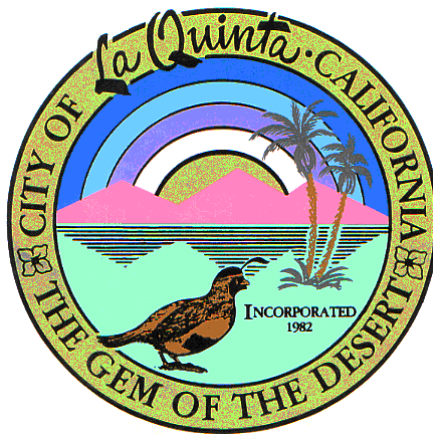




Crime Statistics Summary November -- 2009

Prepared for



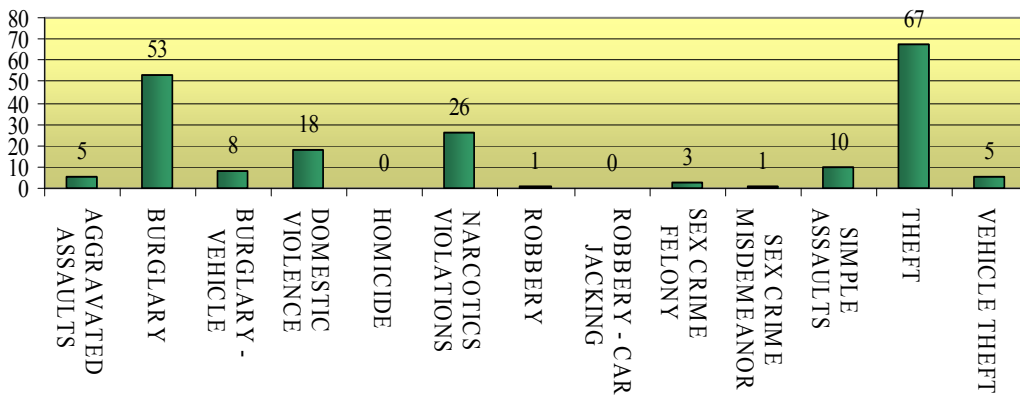
CITY OF LA QUINTA Crime Comparison -- November				
CRIME	November 2009	November 2008	YTD 2009	YTD 2008
1 AGGRAVATED ASSAULTS	5	2	58	51
2 BURGLARY	53	73	515	509
3 BURGLARY - VEHICLE	8	41	228	231
4 DOMESTIC VIOLENCE	18	8	157	151
5 HOMICIDE	0	0	1	1
6 NARCOTICS VIOLATIONS	26	19	245	208
7 ROBBERY	1	2	21	31
8 ROBBERY - CAR JACKING	0	0	0	0
9 SEX CRIME FELONY	3	3	53	36
10 SEX CRIME MISDEMEANOR	1	2	22	15
11 SIMPLE ASSAULTS	10	6	70	93
12 THEFT	67	68	757	694
13 VEHICLE THEFT	5	10	76	115

CITY OF LA QUINTA Average Response Time -- November 2009		
TYPE OF CALL	RESPONSE TIME (MINUTES)	NUMBER OF INCIDENTS
EMERGENCY	4.27	1
ROUTINE	7.4	1,206

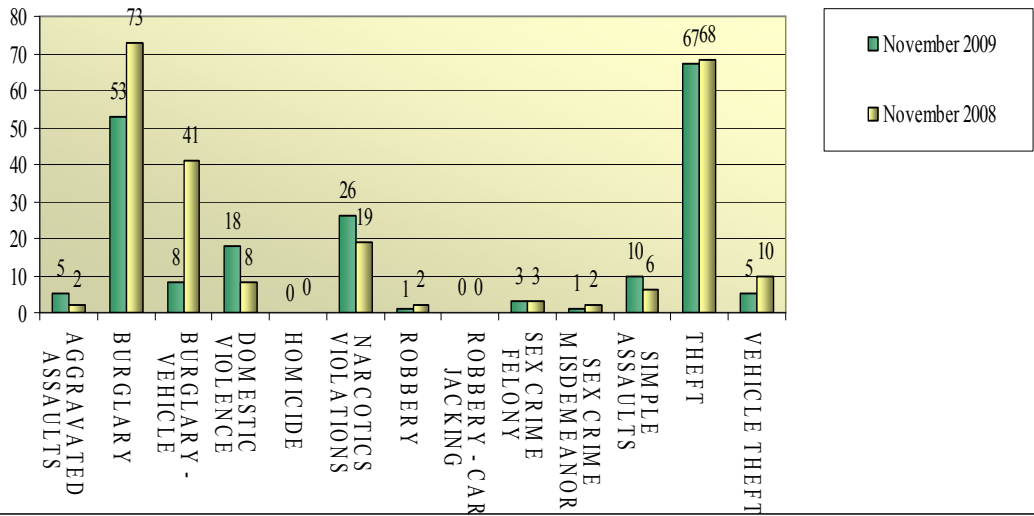
* Data from Riverside Co. Sheriff's Department Data Warehouse, Average Response Time Report.

	Crime Distribution Table	Nov-09	% of Total	Nov-08	% of Total
1	AGGRAVATED ASSAULTS	5	2.54%	2	0.85%
2	BURGLARY	53	26.90%	73	30.93%
3	BURGLARY - VEHICLE	8	4.06%	41	17.37%
4	DOMESTIC VIOLENCE	18	9.14%	8	3.39%
5	HOMICIDE	0	0.00%	0	0.00%
6	NARCOTICS VIOLATIONS	26	13.20%	19	8.05%
7	ROBBERY	1	0.51%	2	0.85%
8	ROBBERY - CAR JACKING	0	0.00%	0	0.00%
9	SEX CRIME FELONY	3	1.52%	3	1.27%
10	SEX CRIME MISDEMEANOR	1	0.51%	2	0.85%
11	SIMPLE ASSAULTS	10	5.08%	6	2.54%
12	THEFT	67	34.01%	68	28.81%
13	VEHICLE THEFT	5	2.54%	10	4.24%
	Total	197	97.46%	236	98.31%

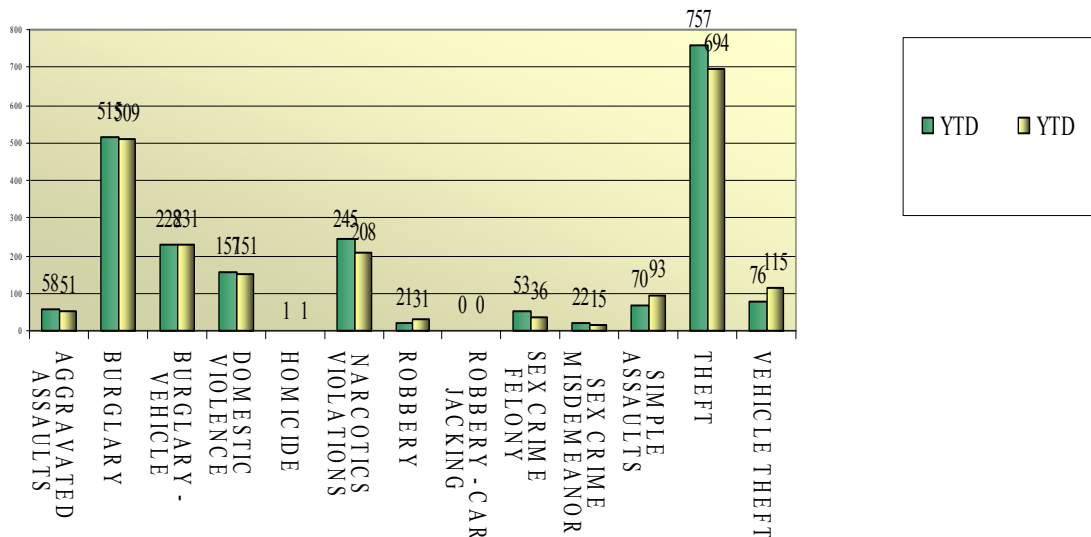
**CITY OF LA QUINTA
November 2009 Crime Distribution**



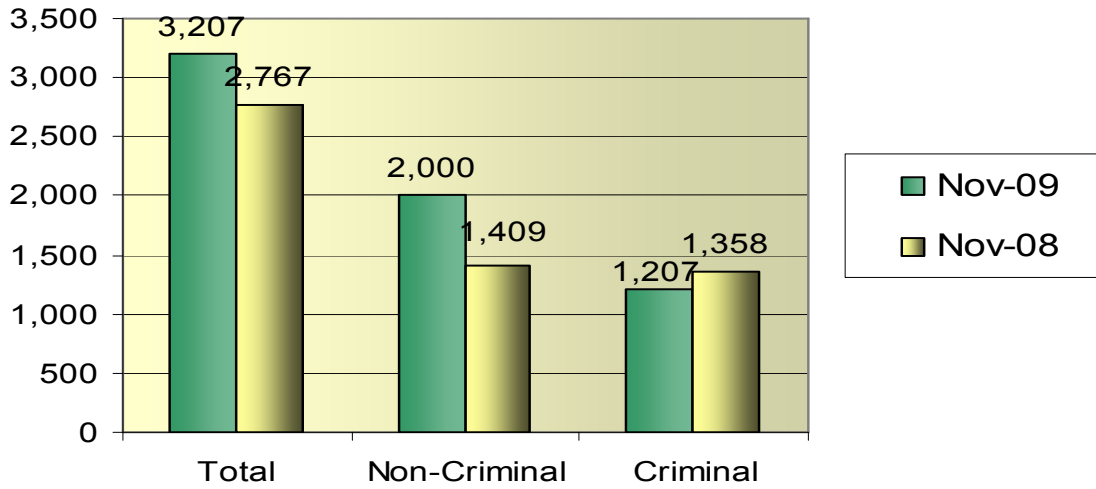
Month to Month Crime Comparison November



Year to Date Crime Comparison November



**Month to Month Calls for Service Comparison
November 2009**



Year to Date Calls for Service Comparison

